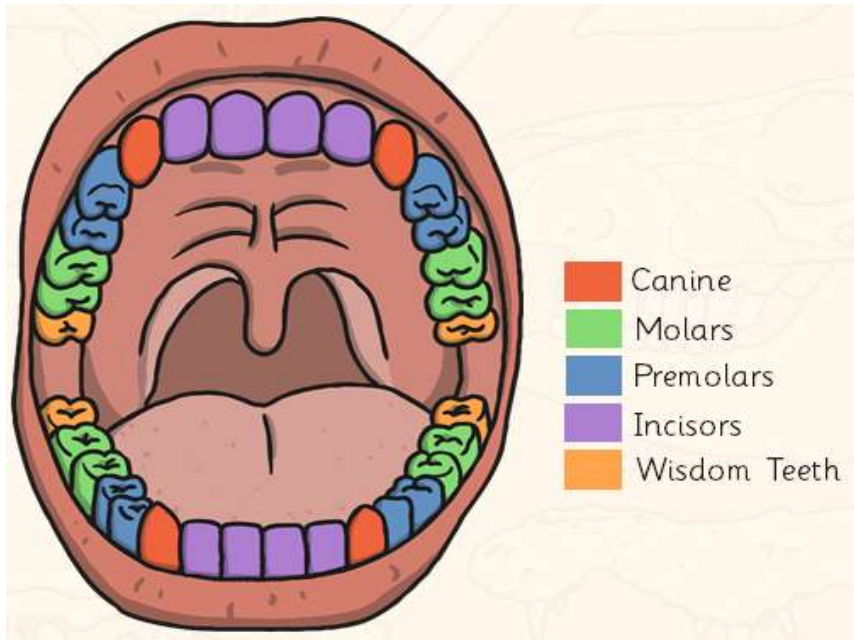


# Science Knowledge Organiser

## Animals including Humans

### Autumn Term 1



The diagram above details the different human teeth

#### Key Vocabulary:

Teeth - each of a set of hard, bony enamel-coated structures used for biting and chewing.

Canines - Used for tearing and ripping food.

Molars - used for grinding food.

Premolars - Holding and crushing food.

Incisors - Used for biting and cutting food.

Wisdom Teeth - has no function as the human diet has evolved.

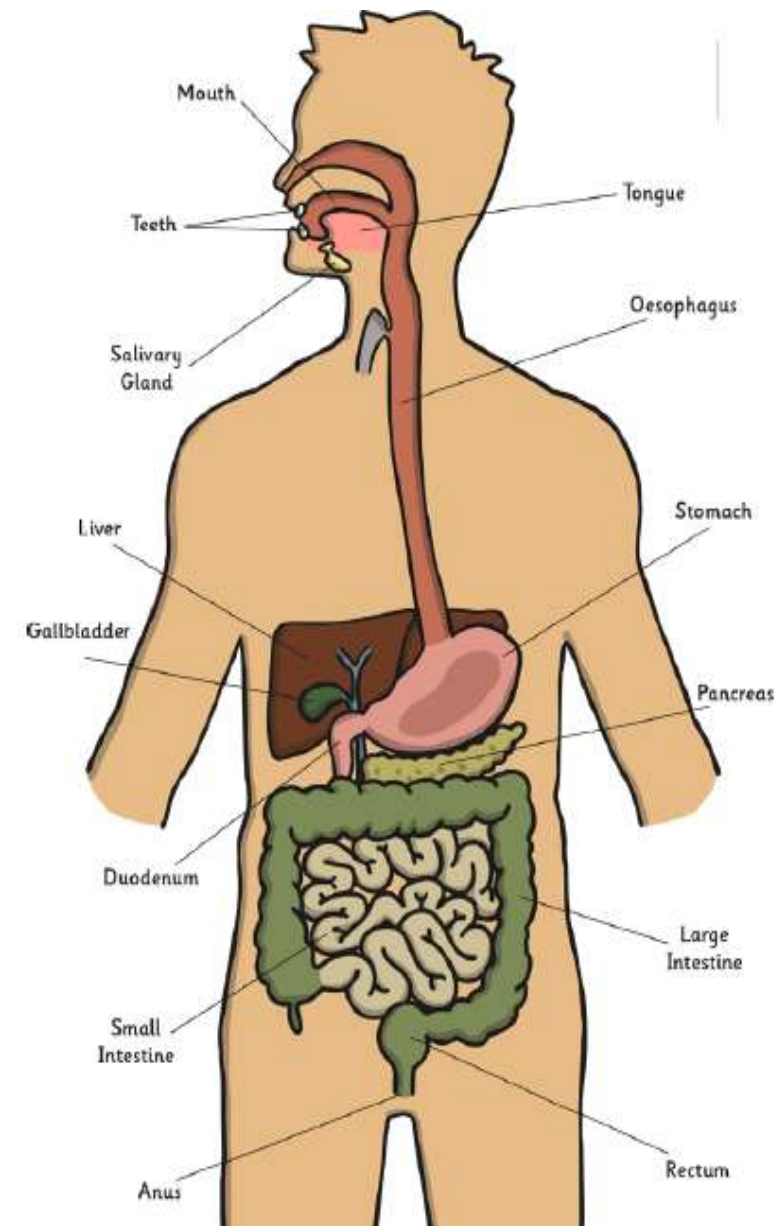
Tongue - the fleshy muscular organ in the mouth of a mammal, used for tasting, licking, swallowing, and articulating speech.

Stomach - the internal organ in which the major part of the digestion of food occurs.

Intestine - lower part of the alimentary canal from the end of the stomach to the anus.

Function - an activity that is natural to or the purpose of a person or thing.

Oesophagus - connects the throat to the stomach in humans.



The diagram above details the human digestive system parts.